

# GIAN® Tape 50 mm

## GIAN Tape

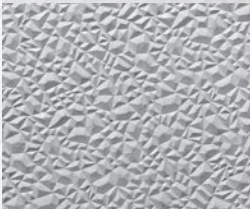
non-slip stair nosing  
GIAN T02 | T04 | T75 | T800



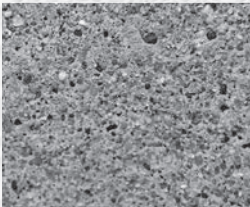
GIAN T02 result in concrete



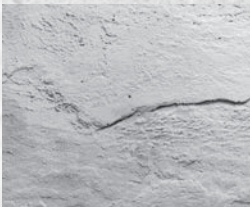
GIAN T02 Sandblast



GIAN T04 Frost



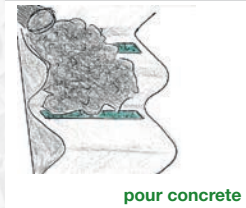
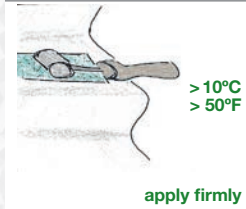
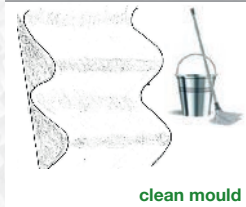
GIAN T75 Expo-gravel



GIAN T800 Slate

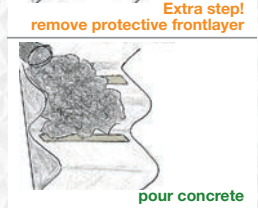
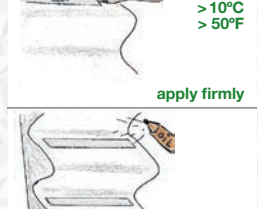
## GIAN Tape

non-slip stair nosing  
manual  
GIAN T02 | T04 | T800



## GIAN Tape

non-slip stair nosing  
manual **GIAN T75**  
**note: back- and frontlayer!**



**Note:**  
GIAN T75 is a retarder.  
To reveal the exposed gravel effect, wash out the unhardened cement nosing using a high-pressure cleaner.

# GIAN® Tape max 1500 mm

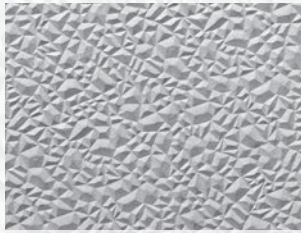
1500 mm

50 mtr

0



GIAN T02 Sandblast



GIAN T04 Frost



GIAN T800 Slate



Compañero BV  
Maarten de Graaf  
Industrieweg 10 c  
NL-3606 AS Maarssen  
The Netherlands

M +31 (0)6 - 24 70 09 96  
[www.companero.nl](http://www.companero.nl)  
[maartendegraaf@companero.nl](mailto:maartendegraaf@companero.nl)



Made in Holland